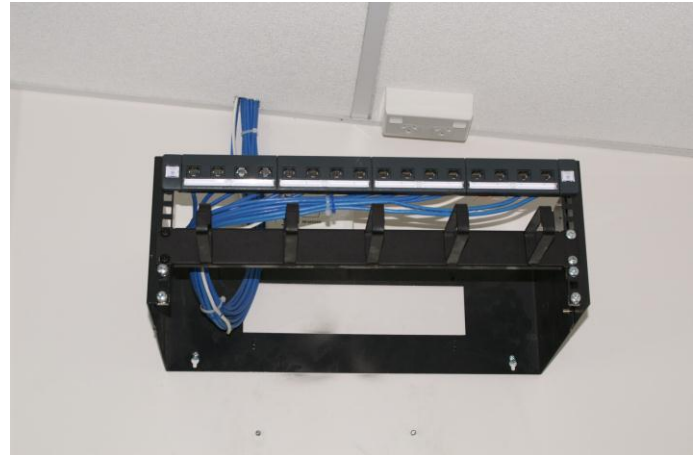


LEVEL 4 EAST WESTPAC HOUSE

- This is an excellent tenancy in a modernized building
- New space 99m2 \$195/m2 p.a. gross plus GST
- New carpet
- New aluminum partitions
- New ceiling and lights
- New entrance door
- New data cabling
- Extensive city and harbour views
- 2 large offices
- Open plan area
- Kitchette
- Walk in lockable safe



Spectra Property Management

John Wickliffe House, PO Box 613 Dunedin – Phone: 03 477 2186 – Fax: 03 477 1390 – Mobile: 0274 351 115

Email: admin@spectra.net.nz – Website: www.spectra.net.nz